

# NAGALAND RURAL

All analysis based on data from 10 out of 11 districts

## Enrollment

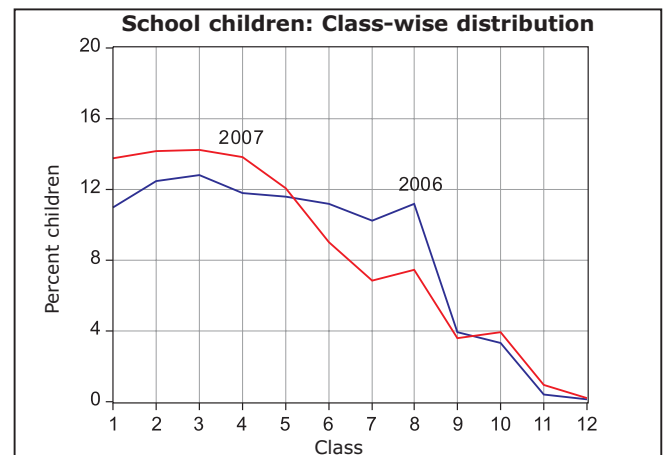
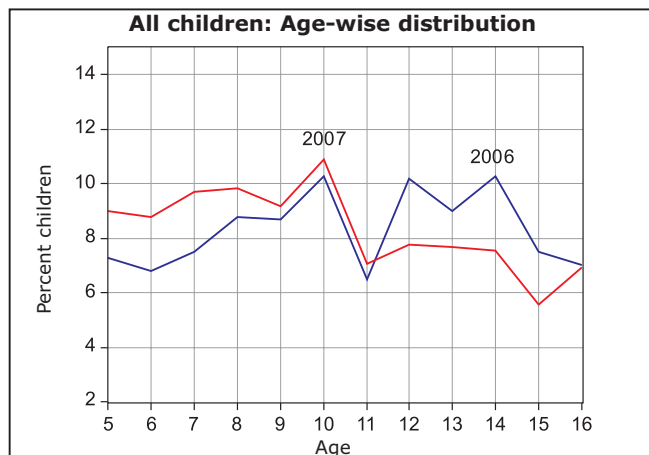
School enrollment and out of school children 2006 vs. 2007

	2006					2007				
	% Children in each age group in different types of schools				% Out of school	% Children in each age group in different types of schools				% Out of school
	Govt.	Pvt.	Other (Madarsa + EGS)	Not in School		Total	Govt.	Pvt.	Other (Madarsa + EGS)	
Age: 6 -14 ALL	46.3	48.7	0.1	5.0	100	59.7	37.0	0.0	3.3	100
Age: 7-16 ALL	46.0	46.1	0.1	7.8	100	56.2	38.5	0.0	5.3	100
Age: 7- 10 ALL	45.1	51.3	0.2	3.5	100	65.0	32.7	0.1	2.2	100
Age: 7-10 BOYS	44.6	51.5	0.1	3.8	100	66.2	31.5	0.0	2.3	100
Age: 7-10 GIRLS	45.7	51.0	0.2	3.1	100	63.6	34.1	0.1	2.2	100
Age: 11-14 ALL	47.3	45.9	0.0	6.8	100	51.9	43.0	0.0	5.2	100
Age: 11-14 BOYS	49.2	43.6	0.0	7.2	100	52.2	42.1	0.0	5.7	100
Age: 11-14 GIRLS	44.7	48.9	0.0	6.4	100	51.5	44.0	0.0	4.6	100
Age: 15-16 ALL	45.0	34.1	0.1	20.8	100	38.6	45.9	0.1	15.5	100
Age: 15-16 BOYS	43.9	32.9	0.0	23.2	100	41.4	42.9	0.2	15.5	100
Age: 15-16 GIRLS	46.6	35.9	0.3	17.2	100	35.1	49.4	0.0	15.5	100

Note: "Not in school" includes children who have never gone to school or have dropped out.

## Age and Class

Age-wise and class-wise distribution of children in sample



## Young Children

In pre-school (Balwadi/Anganwadi) or in school 2006 vs. 2007

	2006					2007						
	In balwadi or anganwadi	% Children			Not going anywhere	Total	In balwadi or anganwadi	% Children			Not going anywhere	Total
		Govt.	Pvt.	Other School				Govt.	Pvt.	Other School		
Age: 3 ALL	38.8				61.2	100	43.1				56.9	100
Age: 4 ALL	78.9				21.1	100	54.2				45.8	100
Age: 5 ALL	71.4	12.0	13.0	0.1	3.6	100	8.5	49.8	35.3	0.1	6.3	100
Age: 6 ALL	30.3	33.1	35.2	0.0	1.5	100	3.6	59.2	34.4	0.1	2.8	100

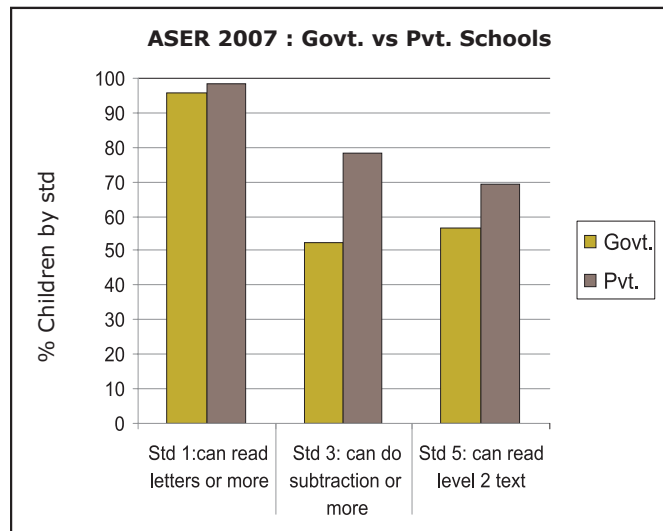
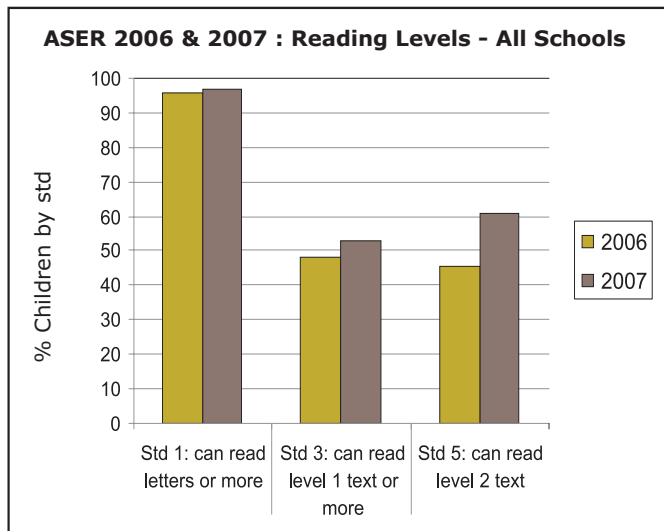
## Learning Level

Reading level: % Children who can read						
Std.	Nothing	Letter	Word	Level 1 (Std 1) Text	Level 2 (Std 2) text)	Total
<b>II</b>	0.8	17.4	53.6	21.6	6.6	100
<b>III</b>	0.7	7.2	39.4	33.2	19.5	100
<b>IV</b>	0.2	2.5	19.6	36.4	41.4	100
<b>V</b>	0.9	1.3	10.5	26.3	61.0	100
<b>VI</b>	0.1	1.3	5.5	22.5	70.7	100
<b>VII</b>	0.1	0.3	3.7	13.1	82.8	100
<b>VIII</b>	0.4	0.8	3.5	8.8	86.5	100
<b>Total</b>	0.9	10.5	27.2	22.6	38.8	100

Arithmetic level: % Children who can						
Std.	Nothing	Recognize Numbers		Subtract	Divide	Total
		1-9	10-99			
<b>I</b>	2.6	25.4	57.7	13.2	1.1	100
<b>II</b>	0.9	11.8	55.1	25.7	6.5	100
<b>III</b>	0.7	4.6	35.4	42.4	16.9	100
<b>IV</b>	0.4	3.0	17.3	45.6	33.8	100
<b>V</b>	0.5	4.1	8.8	38.8	47.8	100
<b>VI</b>	0.3	0.6	4.7	29.4	65.0	100
<b>VII</b>	0.4	0.1	2.4	17.8	79.2	100
<b>VIII</b>	0.1	0.6	1.7	14.4	83.3	100
<b>Total</b>	0.8	7.5	27.3	30.0	34.4	100

Only subtraction and division data comparable with previous ASER.

## Comparisons



## Comprehension & Problem solving

### Ability of children by reading level to read and answer orally

Children in age group : 6 to 10				Children in age group : 11 to 14			
Reading level	% Children in specific reading level	% at each level who can orally answer questions		Reading level	% Children in specific reading level	% at each level who can orally answer questions	
		based on Std 1 level text only	based on Std 2 level text			based on Std 1 level text only	based on Std 2 level text
Word	38.2	10.6	6.6	Word	10.9	26.0	19.6
Std 1 level text	22.7	57.0	21.6	Std 1 level text	24.4	70.4	33.6
Std 2 level text	23.4	83.6	73.3	Std 2 level text	62.3	95.3	87.5

### Ability of children by age to listen to a subtraction problem and answer

In-school children			
Age group	% Children who can solve		
	None	Simple problem only	Both problems
6 to 8	75.4	6.7	17.1
9 to 10	47.0	8.1	43.1
11 to 14	22.8	5.7	70.2

Children not in-school			
Age group	% Children who can solve		
	None	Simple problem only	Both problems
6 to 8	90.5	1.7	7.9
9 to 10	52.6	11.4	36.0
11 to 14	54.8	3.2	39.9

Rani likes her school.  
 Her class is in a big room.  
 Rani has a bag and a book.  
 She also has a pen.

Q. 1) What all does Rani have?  
 Q. 2) What does Rani like?

Salma is a little girl. She had a pretty doll. She loved playing with her doll. One day the doll fell from her hand to the floor. It broke into many pieces. Salma was very sad. She cried a lot. Her mother gave her another doll. Now she is happy again.

Q. 3) What did Salma love doing?  
 Q. 4) Why was Salma sad?

1) You have Rs.50. From that you buy books for Rs.25. How much money do you have left with you now?

2) You have Rs.50. From that you buy fruit for Rs.23. How much money do you have left with you now?

### Ability of children by arithmetic level to listen to a subtraction problem and answer

Children in age group : 6 to 10				
Arithmetic level	% Children in specific arithmetic level	% Children in specific arithmetic level who can solve		
		None	Simple problem only	Both problems
Number recognition 10-99	38.3	93.6	2.7	3.0
Subtraction	31.6	46.6	14.9	36.0
Division	18.7	15.7	5.3	78.2

Children in age group : 11 to 14				
Arithmetic level	% Children in specific arithmetic level	% Children in specific arithmetic level who can solve		
		None	Simple problem only	Both problems
Number recognition 10-99	10.4	91.0	1.3	6.0
Subtraction	30.3	33.0	11.2	53.2
Division	57.6	5.0	3.7	90.7

### School going children attending tuition class

Std.	% Children							
	I	II	III	IV	V	VI	VII	VIII
Govt. school	15.8	14.5	19.4	19.7	27.6	12.4	16.2	22.1
Pvt. school	31.4	38.7	43.8	44.9	43.1	54.4	52.7	61.7



**School Observations:** Schools visited - Primary (Std 1-4/5): 143; Primary+Upper-primary (Std 1-8): 14

Teacher attendance	2005		2007	
	Std. 1-4/5	Std. 1-8	Std. 1-4/5	Std. 1-8
% teachers attending (average)	Insufficient Data		91.5	92.7
% schools with no teacher present	Insufficient Data		0.6	0.0
% schools with all teachers present	Insufficient Data		65.2	42.9

Children's attendance	2005		2007	
	Std. 1-4/5	Std. 1-8	Std. 1-4/5	Std. 1-8
% enrolled children attending (average)	Insufficient Data		84.1	79.0
% schools with less than 50% enrolled children attending	Insufficient Data		3.0	14.3
% schools with 75% and more enrolled children attending	Insufficient Data		81.4	81.0

Pupil teacher ratio (median)	2005		2007	
	Std. 1-4/5*	Std. 1-8	Std. 1-4/5	Std. 1-8
Based on children enrolled & teachers appointed	Insufficient Data		12.2	12.9
Based on children & teachers present	Insufficient Data		11.1	12.9

School grants and teacher grants	2006		2007*	
	Std. 2	Std. 4	Std. 2	Std. 4
	% Schools			
Teacher received TLM grant	90.2	90.1	88.5	88.5
School received school maintenance grant	91.7		92.2	

Water/toilet and midday meal	2005		2007	
	Std. 1-4/5*	Std. 1-8	Std. 1-4/5	Std. 1-8
	% Schools			
Schools with no water provision	Insufficient Data		62.5	52.4
Schools with water provision but water not available	Insufficient Data		5.4	0.0
Schools with water provision and water available	Insufficient Data		32.1	47.6
Schools with no toilet provision	Insufficient Data		24.3	19.0
Schools with toilet provision but not being used	Insufficient Data		3.5	0.0
Schools with toilet provision and use	Insufficient Data		72.3	81.0
Schools with midday meal being served on that day	Insufficient Data		96.6	100.0

Multigrade classes	2007	
	Std. 1-4/5	Std. 1-8
Schools in which...	% Schools	
Std II class sits with another class	3.5	5.3
Std IV class sits with another class	2.9	5.0

Over 90% classes that were visited have blackboards. In over 90% of these classes, most children have textbooks, notebooks and pen or pencil.

Please note that while 2005 data was collected during ASER 2005, 2006 data reported in the Grants table was collected in ASER 2007 by asking for last year's grant information to the respondent.

Note: ASER 2007 survey was carried out in October and November 2007. One govt. school with primary grades was visited in the sampled village. If there was more than one govt. school with primary grades, then the school with the highest enrollment was visited. Hence the schools visited in the survey do not represent a random sample from the district. The school visits were generally done either on a Saturday or a Monday.



\*Grants for 2007 may be lower than 2006 since the survey was conducted in the middle of the year.



## Performance of districts

District	Pre- school	Out of school	Private school	Std 1-2 : Learning levels			Std 3-5 : Learning levels		
	% Children (Age 3-4) in Anganwadi or other pre-school	% Children (Age 6-14) Out of school	% Children (Age 6-14) in Private school	% Children (Std 1-2) who CAN READ letters, words or more in OWN LANGUAGE	% Children (Std 1-2) who CAN RECOGNIZE NUMBERS (1-9) or more	% Children (Std 1-2) who CAN READ letters or more in ENGLISH**	% Children (Std 3-5) who CAN READ Level 1 (Std 1) text or more in OWN LANGUAGE	% Children (Std 3-5) who CAN SUBTRACT or do more	% Children (Std 3-5) who CAN READ sentences in ENGLISH**
Mon	85.3	6.5	31.4	97.3	98.9		65.3	70.0	
Mokokchung*		0.9	46.0	99.4	100.0		83.0	72.5	
Zunheboto	2.4	4.0	52.6	90.3	87.1		57.9	67.3	
Dimapur	4.1	0.4	58.8	99.6	100.0		92.5	97.4	
Phek	68.2	3.4	36.6	100.0	100.0		76.7	77.6	
Peren	72.1	1.9	25.2	96.4	96.4		81.2	83.3	
Longleng	72.7	3.1	16.8	96.2	97.6		40.6	75.9	
Kiphire*		0.3	46.7	100.0	100.0		62.3	66.3	
Tuensang	38.8	7.2	10.5	98.0	97.0		59.7	58.9	
Kohima	63.6	0.7	44.9	97.6	98.8		74.8	76.5	
<b>Total</b>	<b>48.8</b>	<b>3.3</b>	<b>37.0</b>	<b>98.0</b>	<b>98.3</b>		<b>71.7</b>	<b>74.4</b>	



\* Blank cells indicate insufficient data.

\*\* Nagaland children were tested in English; therefore data is not reported for English as a second language.